



STARK WIE EIN STIER

FAÇADE PANEL FX. 12 (PREFA)

CAD DETAILS

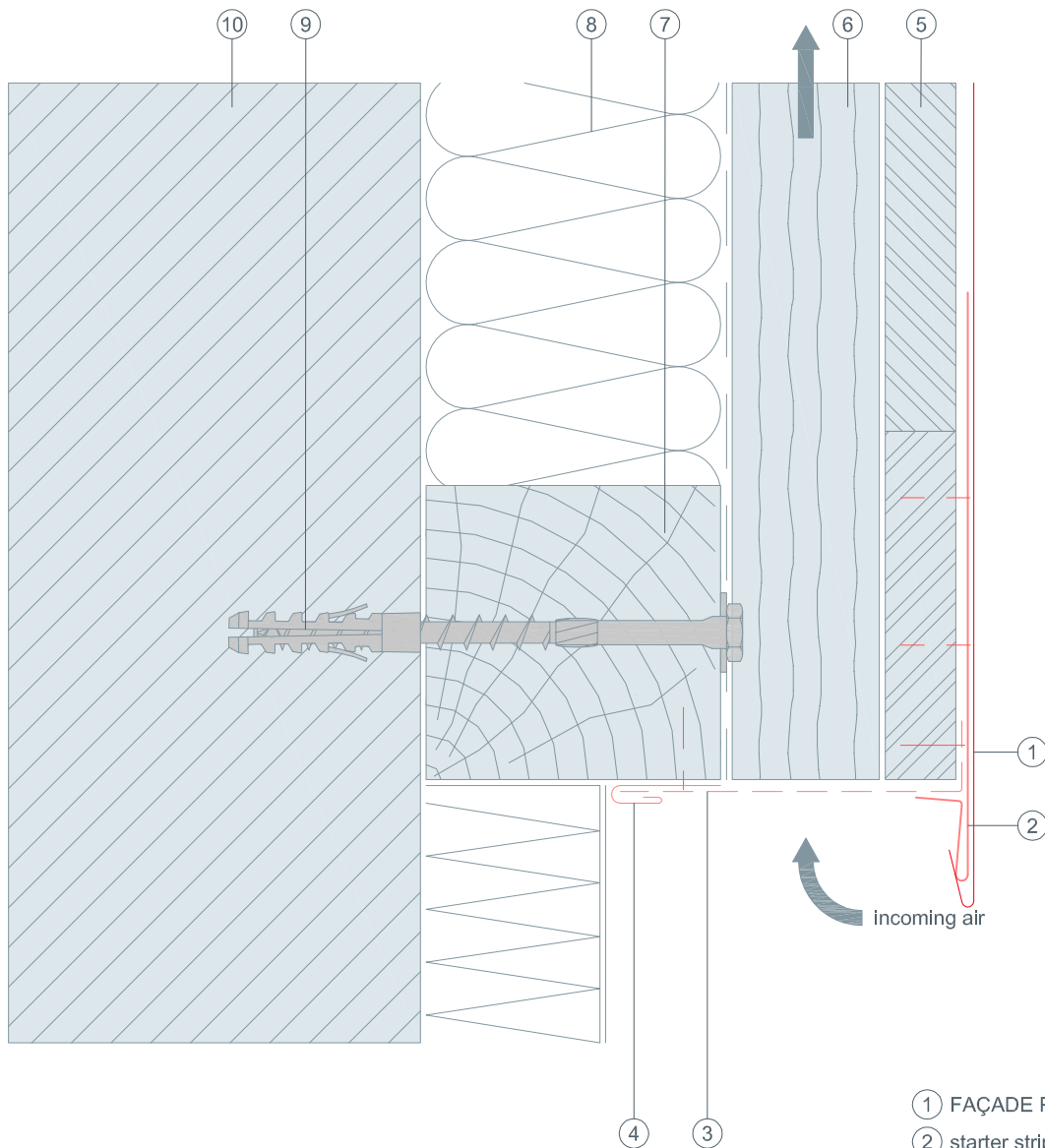
CONTENTS:

- 2 vertical cross-section – bottom connection
- 3 horizontal cross-section – wall connection
- 4 horizontal cross-section – external corner
- 5 horizontal cross-section – internal corner
- 6 vertical cross-section – window ledge
- 7 horizontal cross-section – window reveals
- 8 vertical cross-section – window lintel
- 9 vertical cross-section – top connection
- 10 vertical cross-section – roof parapet
- 11 vertical cross-section — installation dimension



STARK WIE EIN STIER

bottom connection vertical cross-section FAÇADE PANEL FX. 12 (PREFA) CAD DETAILS

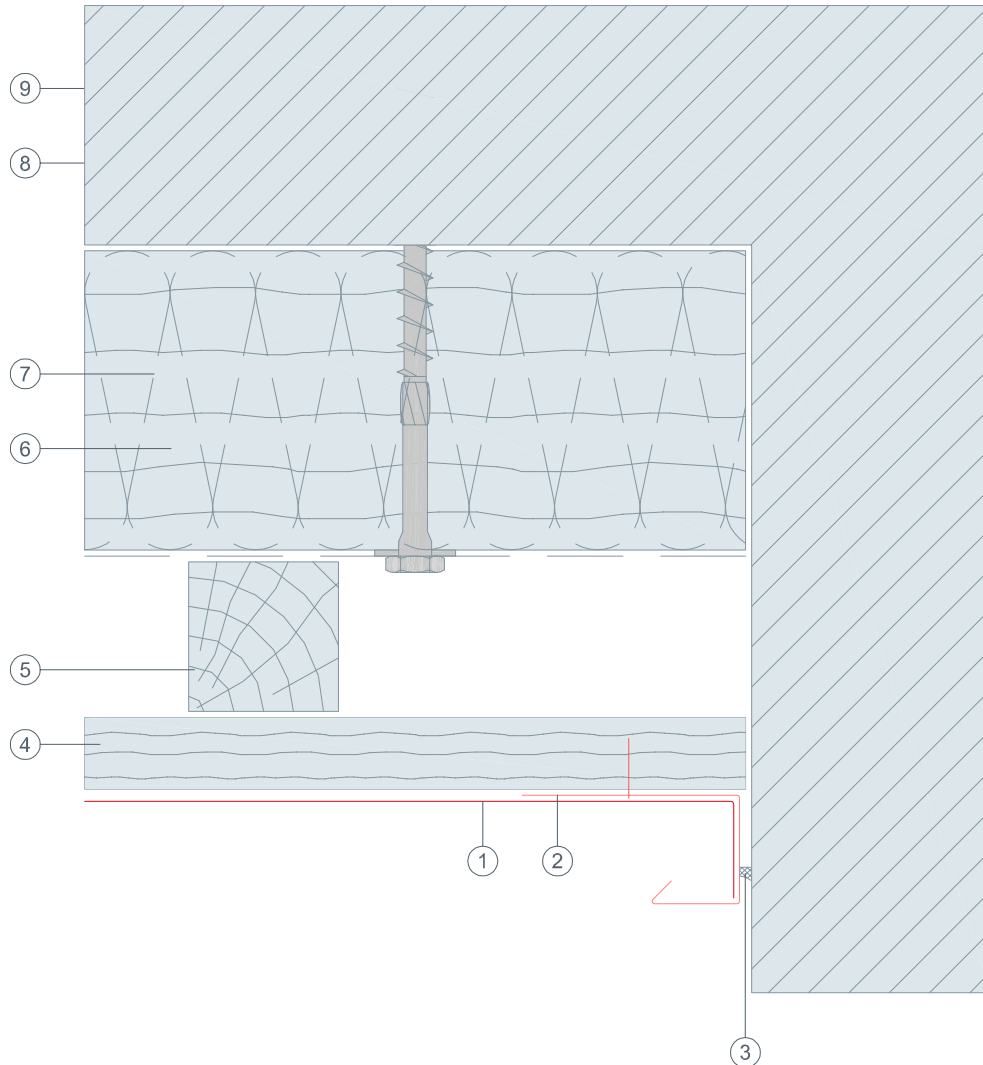


- ① FAÇADE PANEL FX. 12 (PREFA)
- ② starter strip for FX.12 (PREFA)
- ③ perforated metal plate (canted)
- ④ insertion profile (PREFA)
- ⑤ solid sheathing conforming to national guidelines
- ⑥ counter batten - ventilation gap
- ⑦ nogging piece
- ⑧ insulation
- ⑨ fastener driven into the supporting structure
- ⑩ structural substrate



STARK WIE EIN STIER

wall connection horizontal cross-section FAÇADE PANEL FX. 12 (PREFA) CAD DETAILS



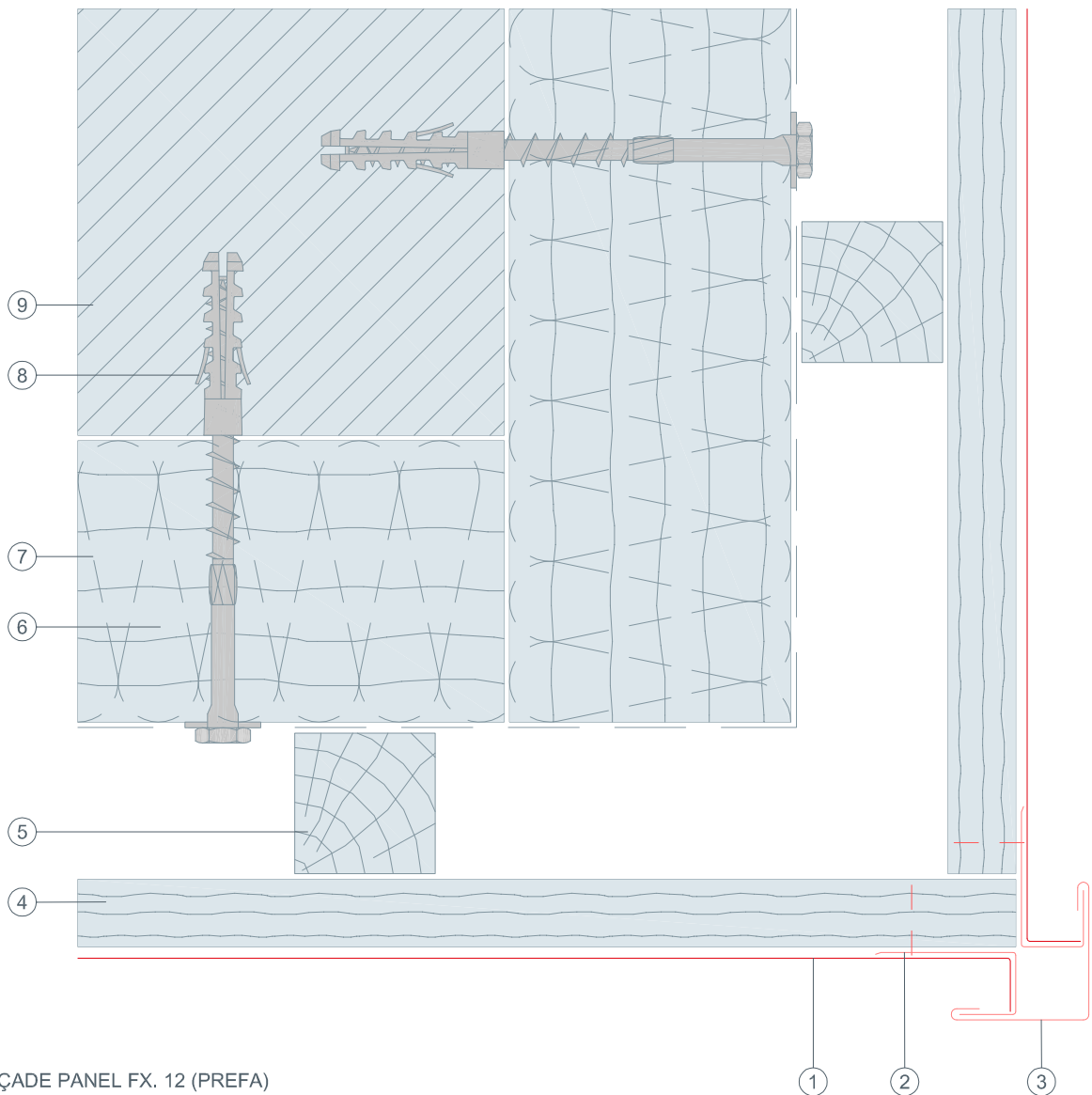
- ① FAÇADE PANEL FX. 12 (PREFA)
- ② channel profile (canted)
- ③ permanently elastic sealing joint
- ④ solid sheathing conforming to national guidelines
- ⑤ counter batten - ventilation gap
- ⑥ nogging piece
- ⑦ insulation
- ⑧ fastener driven into the supporting structure
- ⑨ structural substrate



STARK WIE EIN STIER

external corner horizontal cross-section FAÇADE PANEL FX. 12 (PREFA)

CAD DETAILS



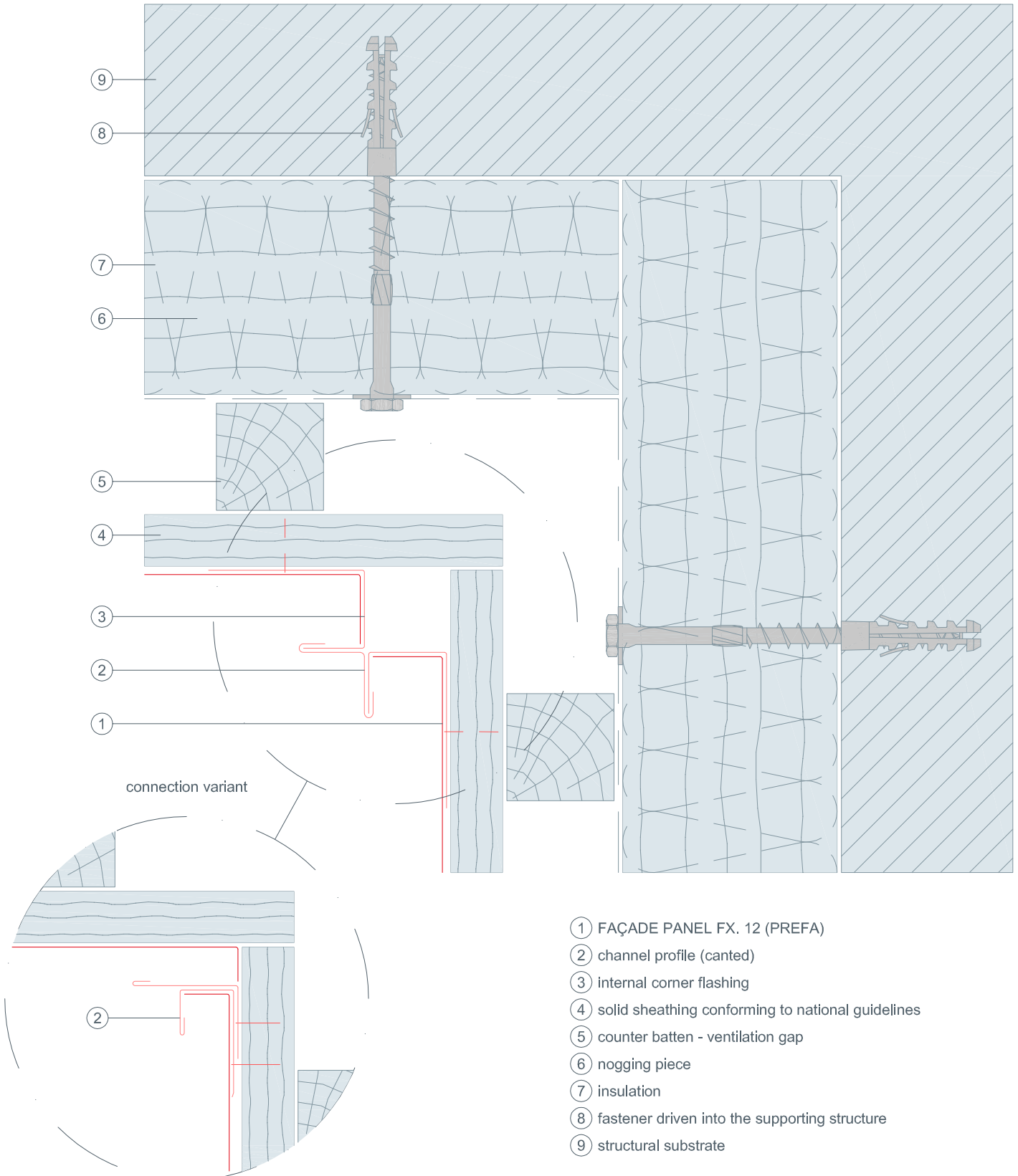
- ① FAÇADE PANEL FX. 12 (PREFA)
- ② channel profile (canted)
- ③ external corner flashing
- ④ solid sheathing conforming to national guidelines
- ⑤ counter batten - ventilation gap
- ⑥ nogging piece
- ⑦ insulation
- ⑧ fastener driven into the supporting structure
- ⑨ structural substrate



STARK WIE EIN STIER

internal corner horizontal cross-section FAÇADE PANEL FX. 12 (PREFA)

CAD DETAILS

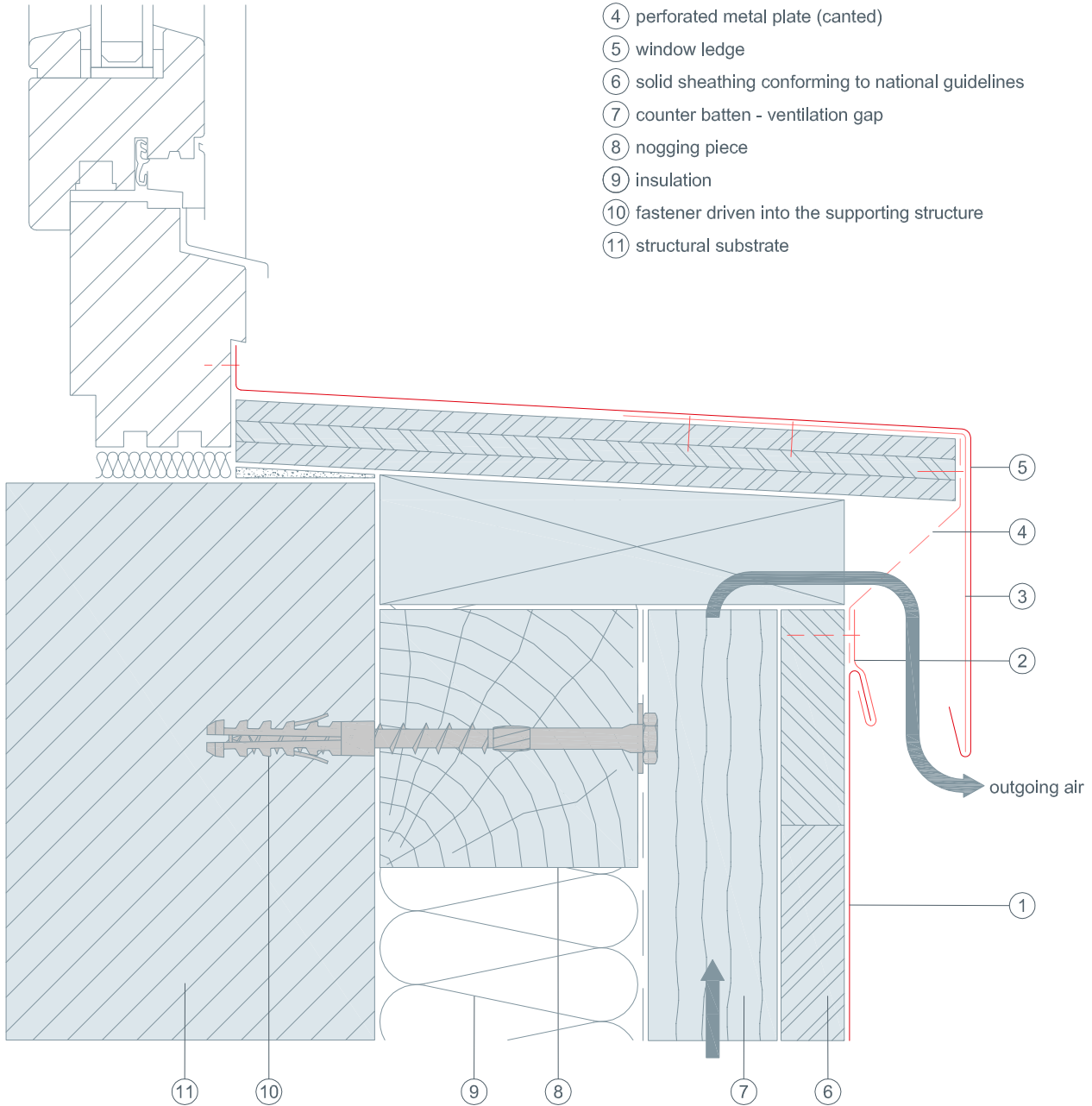




STARK WIE EIN STIER

window ledge vertical cross-section FAÇADE PANEL FX. 12 (PREFA) CAD DETAILS

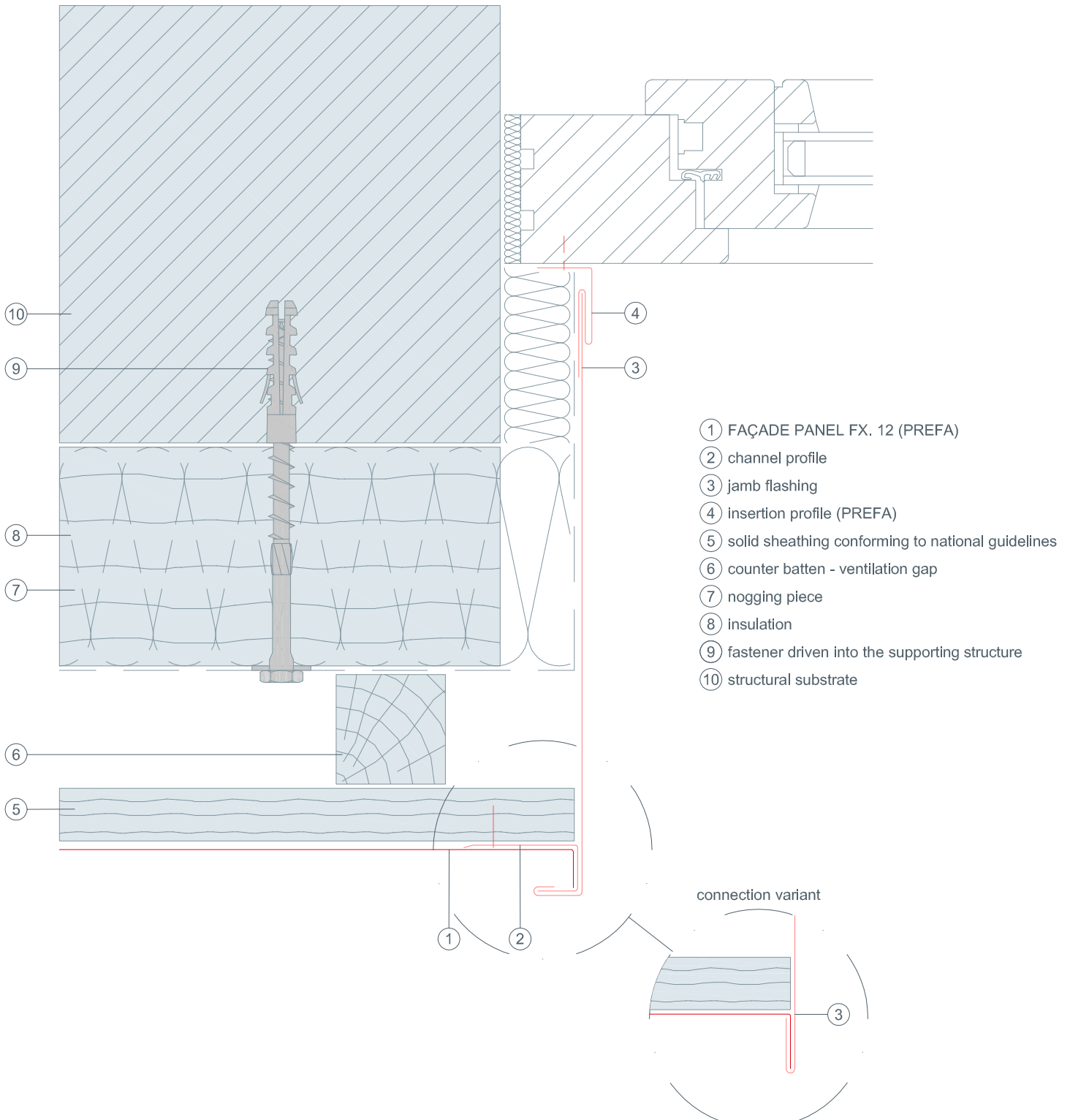
- ① FAÇADE PANEL FX. 12 (PREFA)
- ② clip
- ③ window ledge flashing strip
- ④ perforated metal plate (canted)
- ⑤ window ledge
- ⑥ solid sheathing conforming to national guidelines
- ⑦ counter batten - ventilation gap
- ⑧ nogging piece
- ⑨ insulation
- ⑩ fastener driven into the supporting structure
- ⑪ structural substrate





STARK WIE EIN STIER

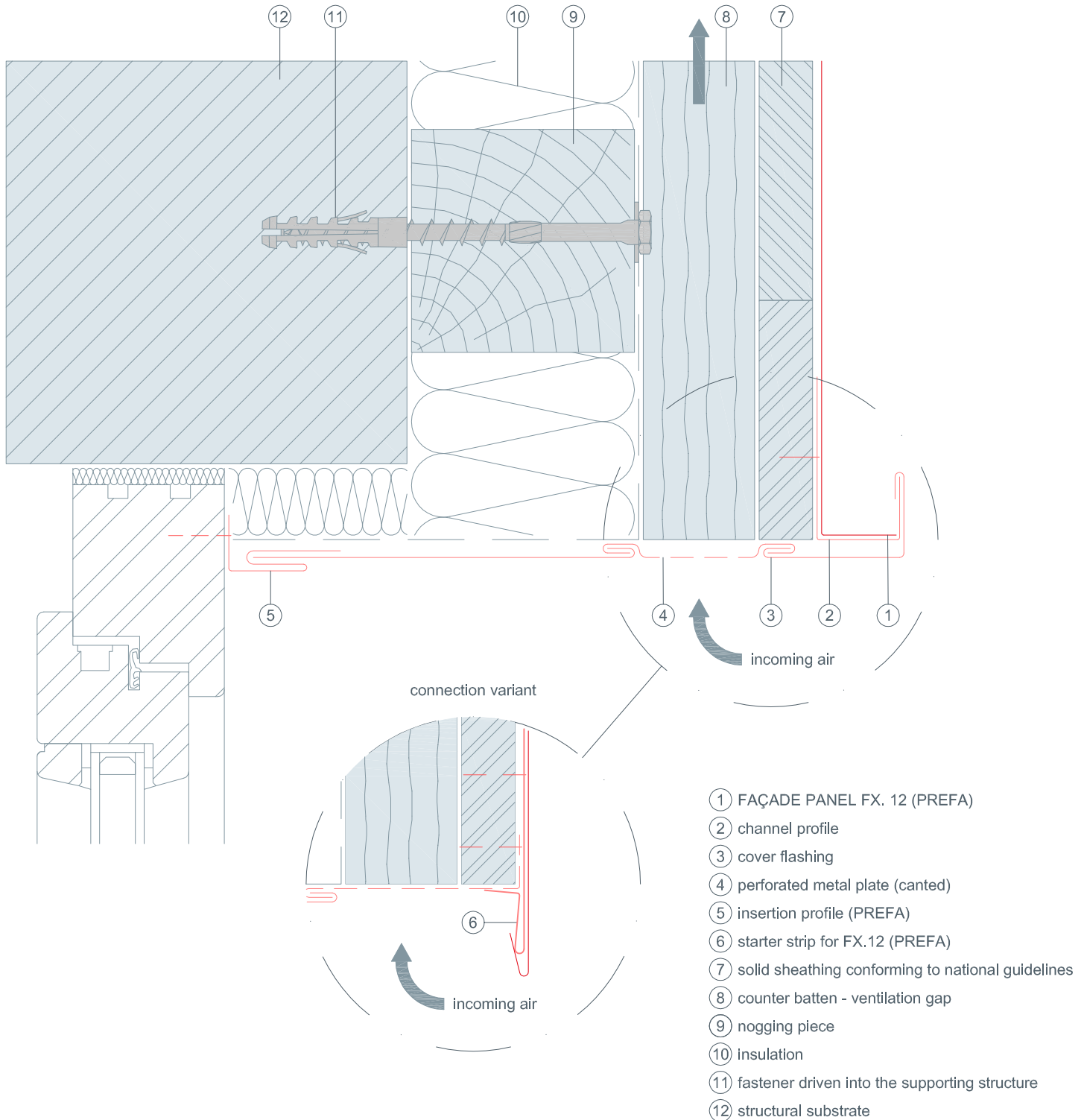
window reveals horizontal cross-section FAÇADE PANEL FX. 12 (PREFA) CAD DETAILS





STARK WIE EIN STIER

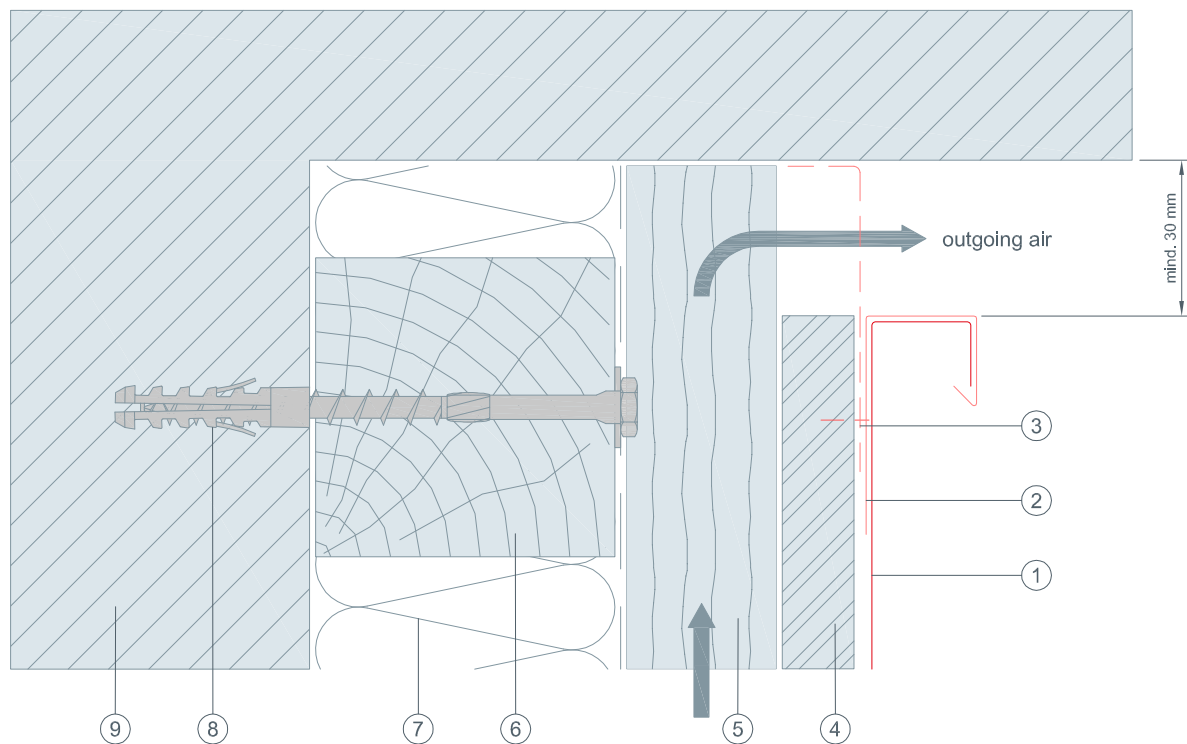
window lintel vertical cross-section FAÇADE PANEL FX. 12 (PREFA) CAD DETAILS





STARK WIE EIN STIER

top connection vertical cross-section FAÇADE PANEL FX. 12 (PREFA) CAD DETAILS

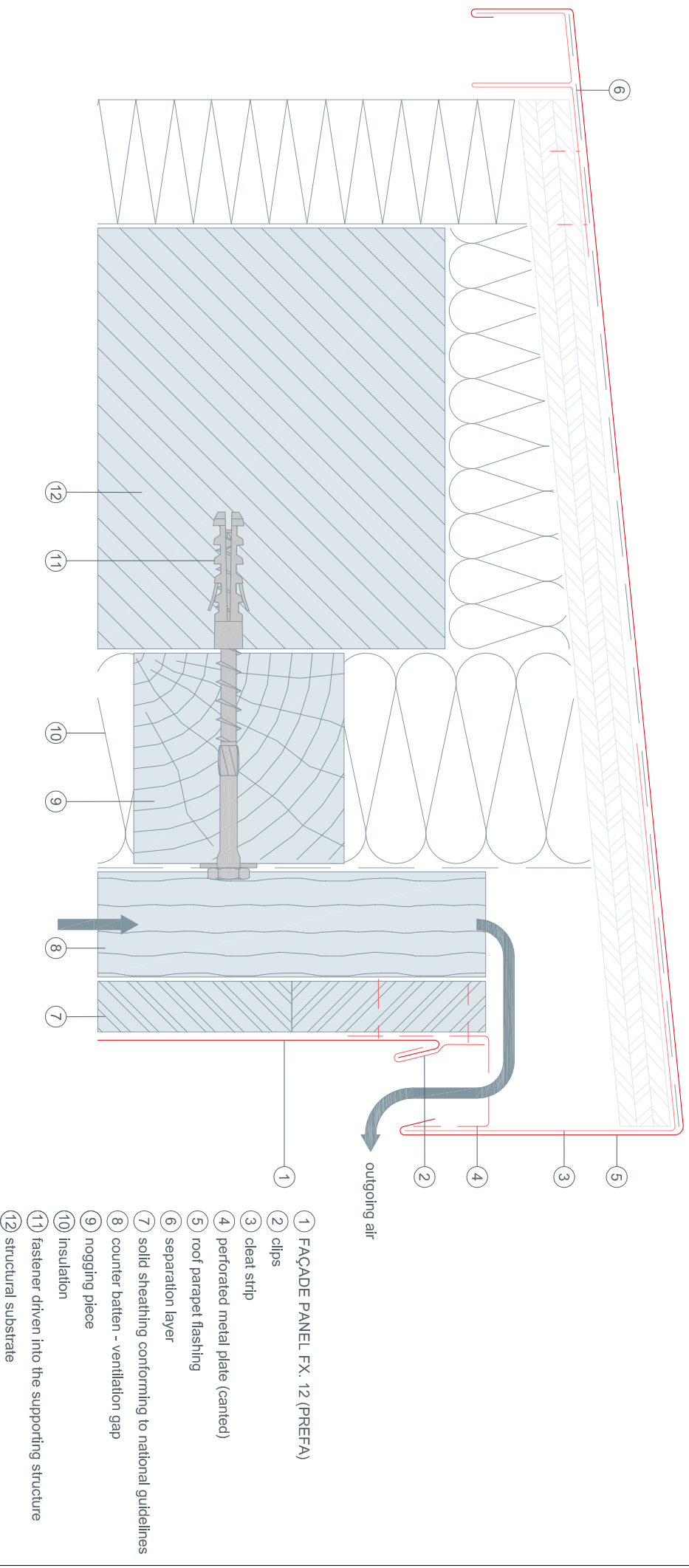


- ① FAÇADE PANEL FX. 12 (PREFA)
- ② channel profile
- ③ perforated metal plate (canted)
- ④ solid sheathing conforming to national guidelines
- ⑤ counter batten - ventilation gap
- ⑥ nogging piece
- ⑦ insulation
- ⑧ fastener driven into the supporting structure
- ⑨ structural substrate



STARK WIE EIN STIER

roof parapet vertical cross-section FAÇADE PANEL FX. 12 (PREFA) CAD DETAILS

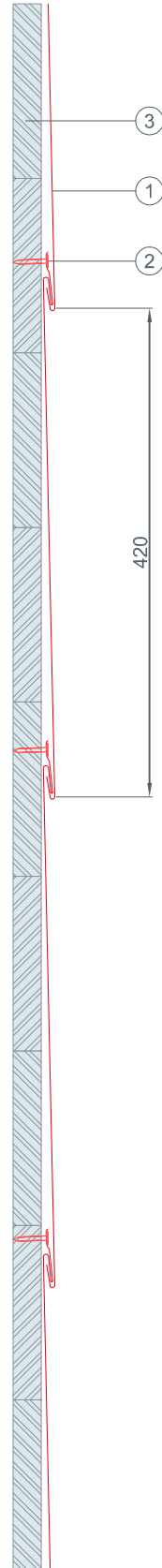


- ① FAÇADE PANEL FX. 12 (PREFA)
- ② clips
- ③ cleat strip
- ④ perforated metal plate (canted)
- ⑤ roof parapet flashing
- ⑥ separation layer
- ⑦ solid sheathing conforming to national guidelines
- ⑧ counter batten - ventilation gap
- ⑨ nogging piece
- ⑩ insulation
- ⑪ fastener driven into the supporting structure
- ⑫ structural substrate



STARK WIE EIN STIER

installation dimension vertical cross-section FAÇADE PANEL FX. 12 (PREFA) CAD DETAILS



- ① FAÇADE PANEL FX. 12 (PREFA)
- ② ring nails, galvanised
- ③ solid sheathing conforming to national guidelines



STARK WIE EIN STIER

FAÇADE PANEL FX. 12 (PREFA)

CAD DETAILS

CONTENTS:

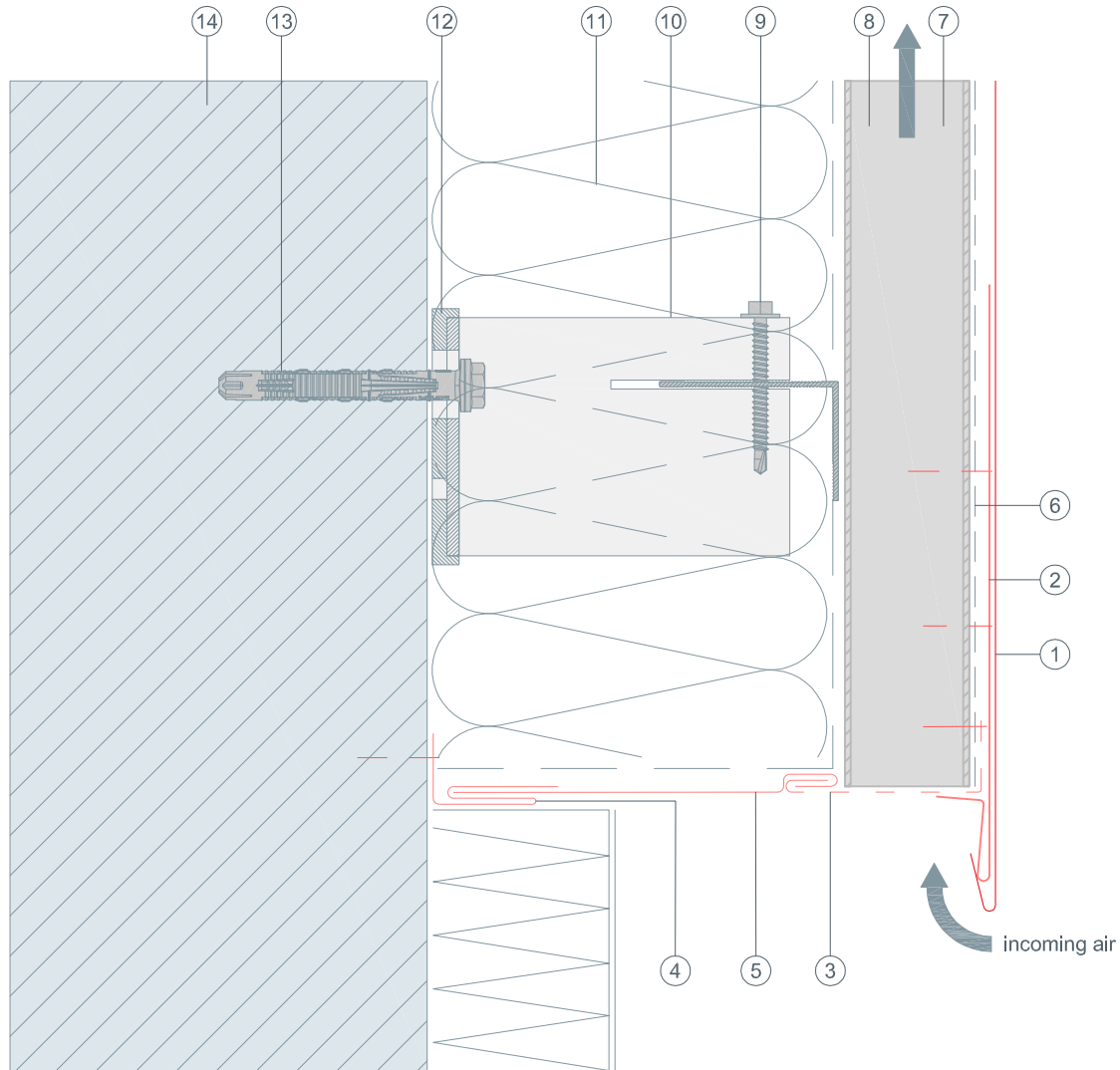
- 13 vertical cross-section – bottom connection
- 14 horizontal cross-section – wall connection
- 15 horizontal cross-section – external corner
- 16 horizontal cross-section – internal corner
- 17 vertical cross-section – window ledge
- 18 horizontal cross-section – window reveals
- 19 vertical cross-section – window lintel
- 20 vertical cross-section – top connection
- 21 vertical cross-section – roof parapet
- 22 vertical cross-section — installation dimension



STARK WIE EIN STIER

bottom connection vertical cross-section FAÇADE PANEL FX. 12 (PREFA)

CAD DETAILS



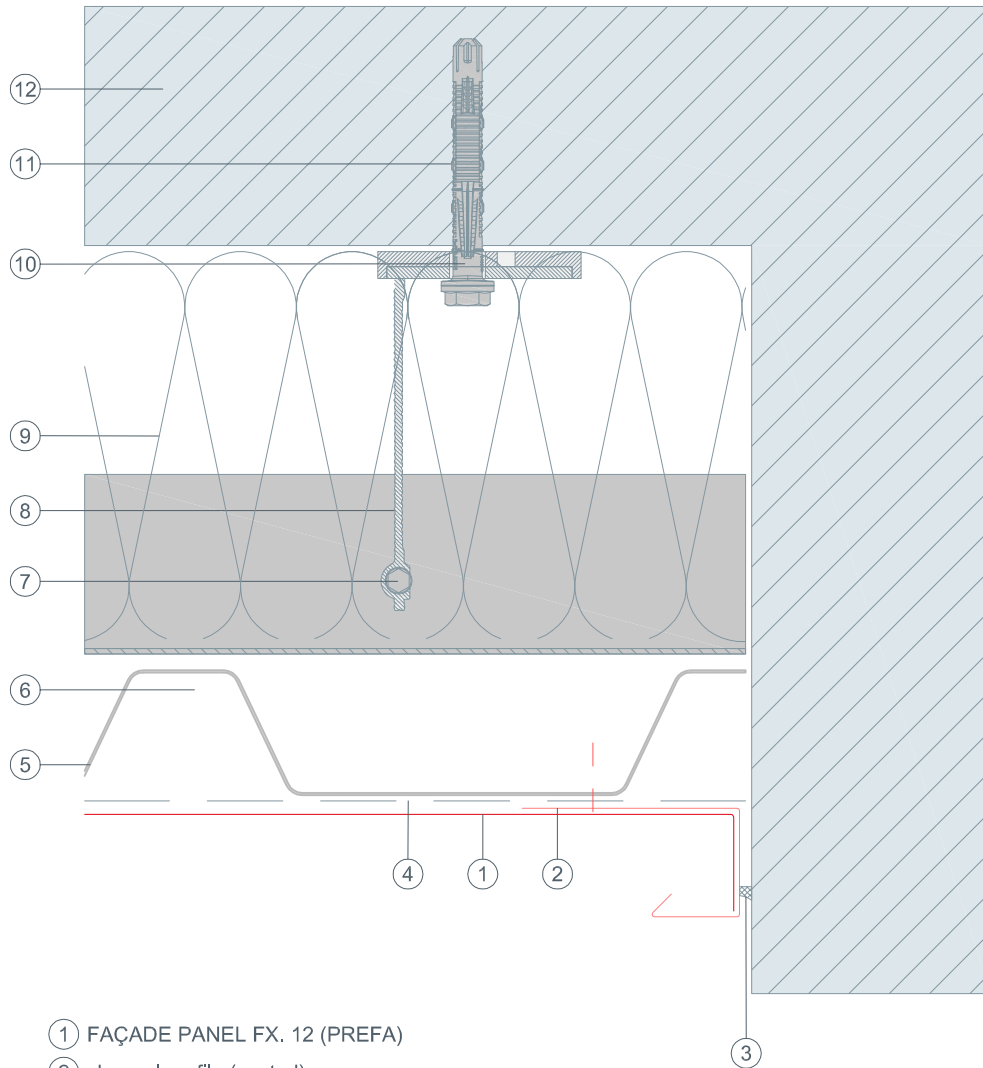
- ① FAÇADE PANEL FX. 12 (PREFA)
- ② starter strip for FX.12 (PREFA)
- ③ perforated metal plate (canted)
- ④ insertion profile (PREFA)
- ⑤ cover flashing
- ⑥ separation layer
- ⑦ trapezoidal sheet
- ⑧ ventilation gap
- ⑨ connection screw
- ⑩ spacer bracket
- ⑪ insulation
- ⑫ thermal break
- ⑬ fastener driven into the supporting structure
- ⑭ structural substrate



STARK WIE EIN STIER

wall connection horizontal cross-section FAÇADE PANEL FX. 12 (PREFA)

CAD DETAILS



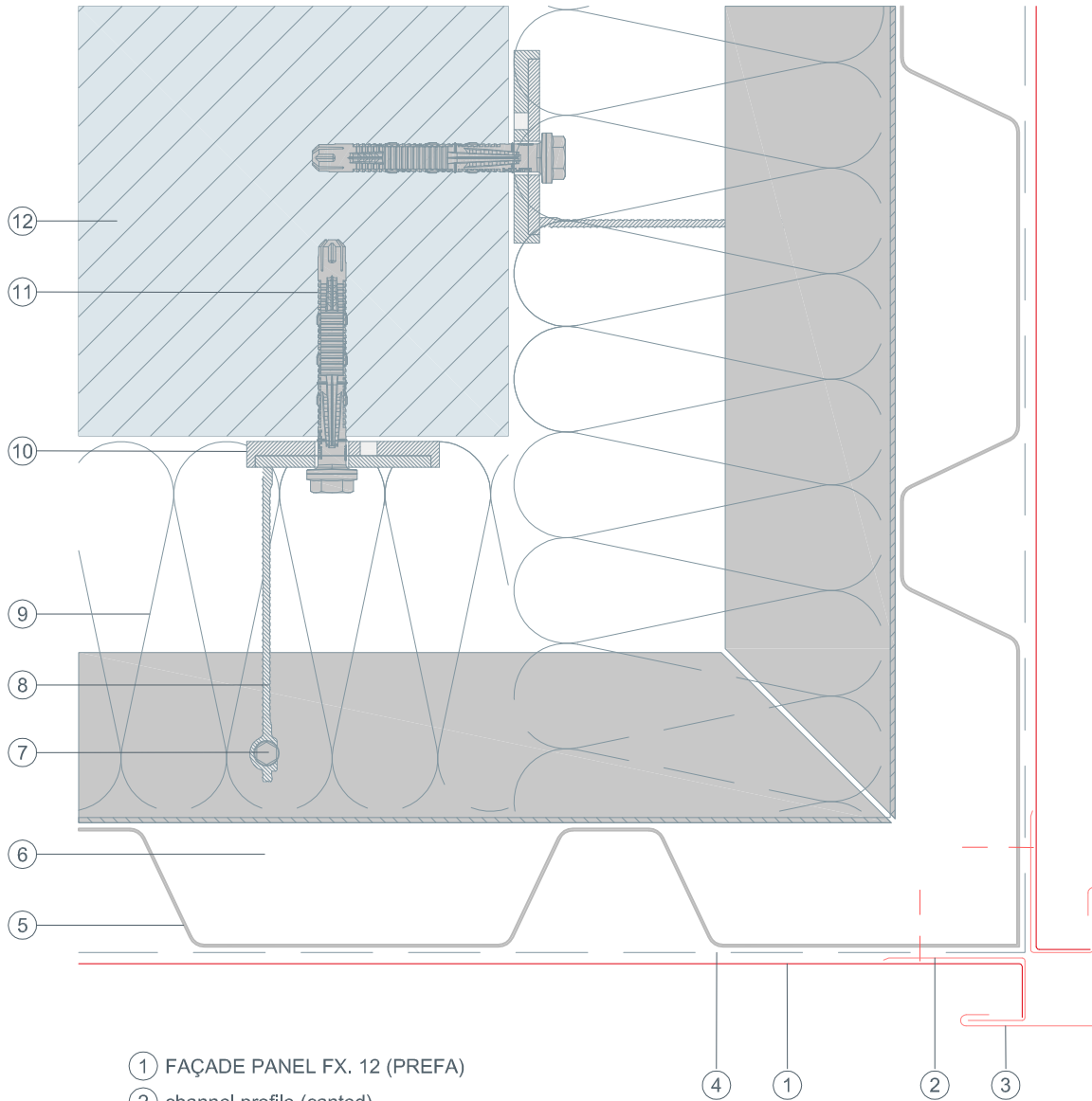
- ① FAÇADE PANEL FX. 12 (PREFA)
- ② channel profile (canted)
- ③ permanently elastic sealing joint
- ④ separation layer
- ⑤ trapezoidal sheet
- ⑥ ventilation gap
- ⑦ connection screw
- ⑧ spacer bracket
- ⑨ insulation
- ⑩ thermal break
- ⑪ fastener driven into the supporting structure
- ⑫ structural substrate



STARK WIE EIN STIER

external corner horizontal cross-section FAÇADE PANEL FX. 12 (PREFA)

CAD DETAILS



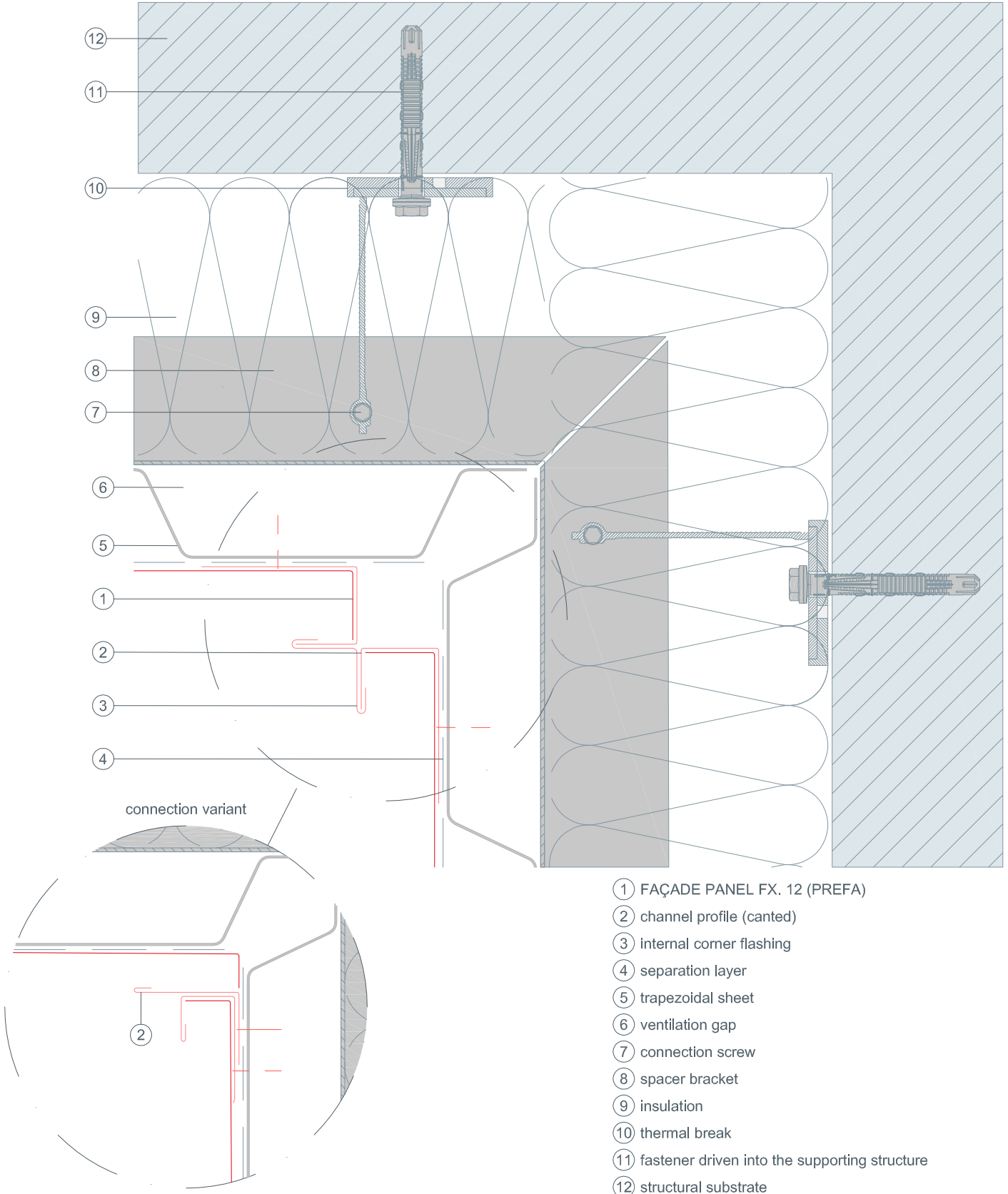
- ① FAÇADE PANEL FX. 12 (PREFA)
- ② channel profile (canted)
- ③ external corner flashing
- ④ separation layer
- ⑤ trapezoidal sheet
- ⑥ ventilation gap
- ⑦ connection screw
- ⑧ spacer bracket
- ⑨ insulation
- ⑩ thermal break
- ⑪ fastener driven into the supporting structure
- ⑫ structural substrate



STARK WIE EIN STIER

internal corner horizontal cross-section FAÇADE PANEL FX. 12 (PREFA)

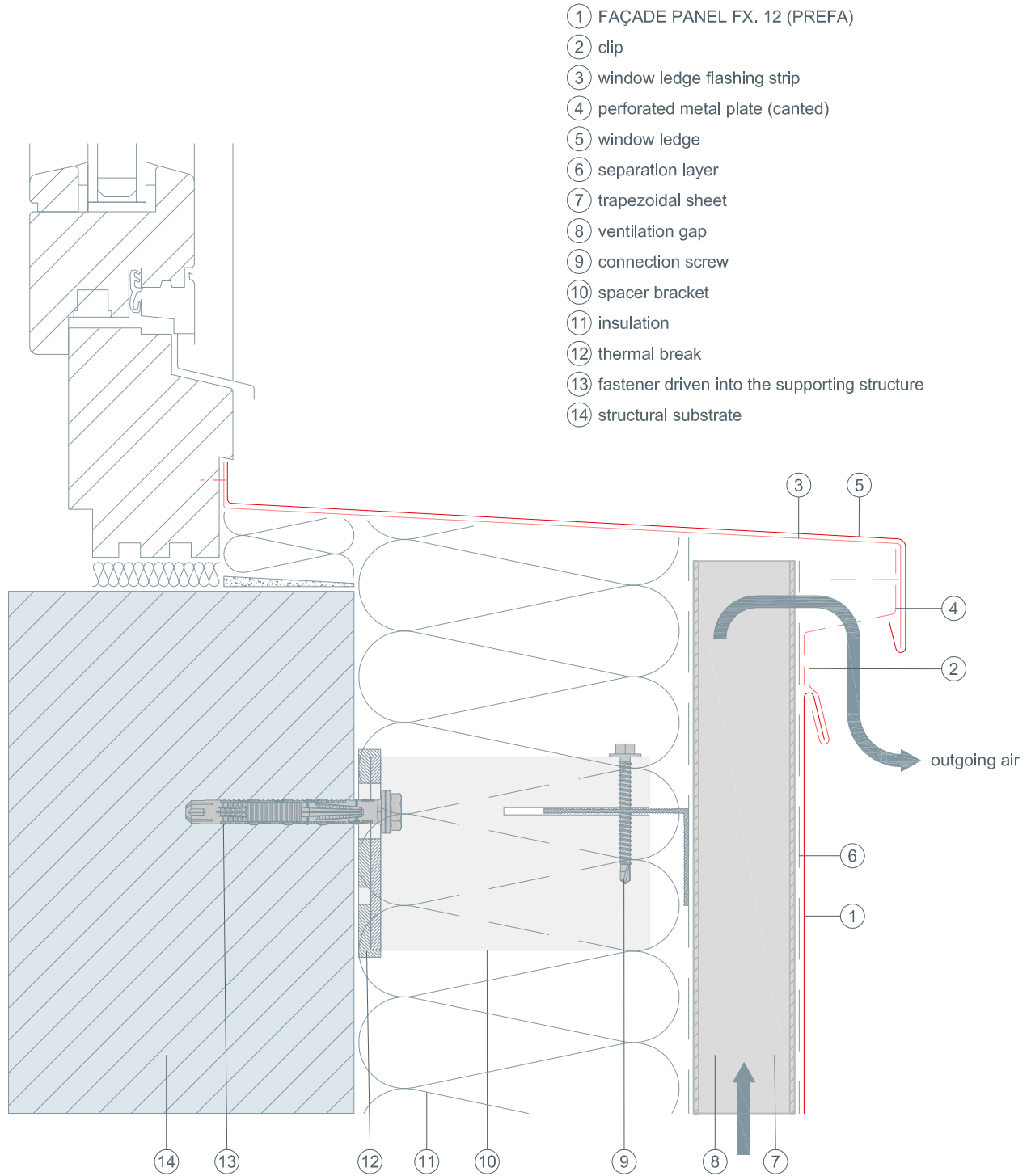
CAD DETAILS





STARK WIE EIN STIER

window ledge vertical cross-section FAÇADE PANEL FX. 12 (PREFA) CAD DETAILS

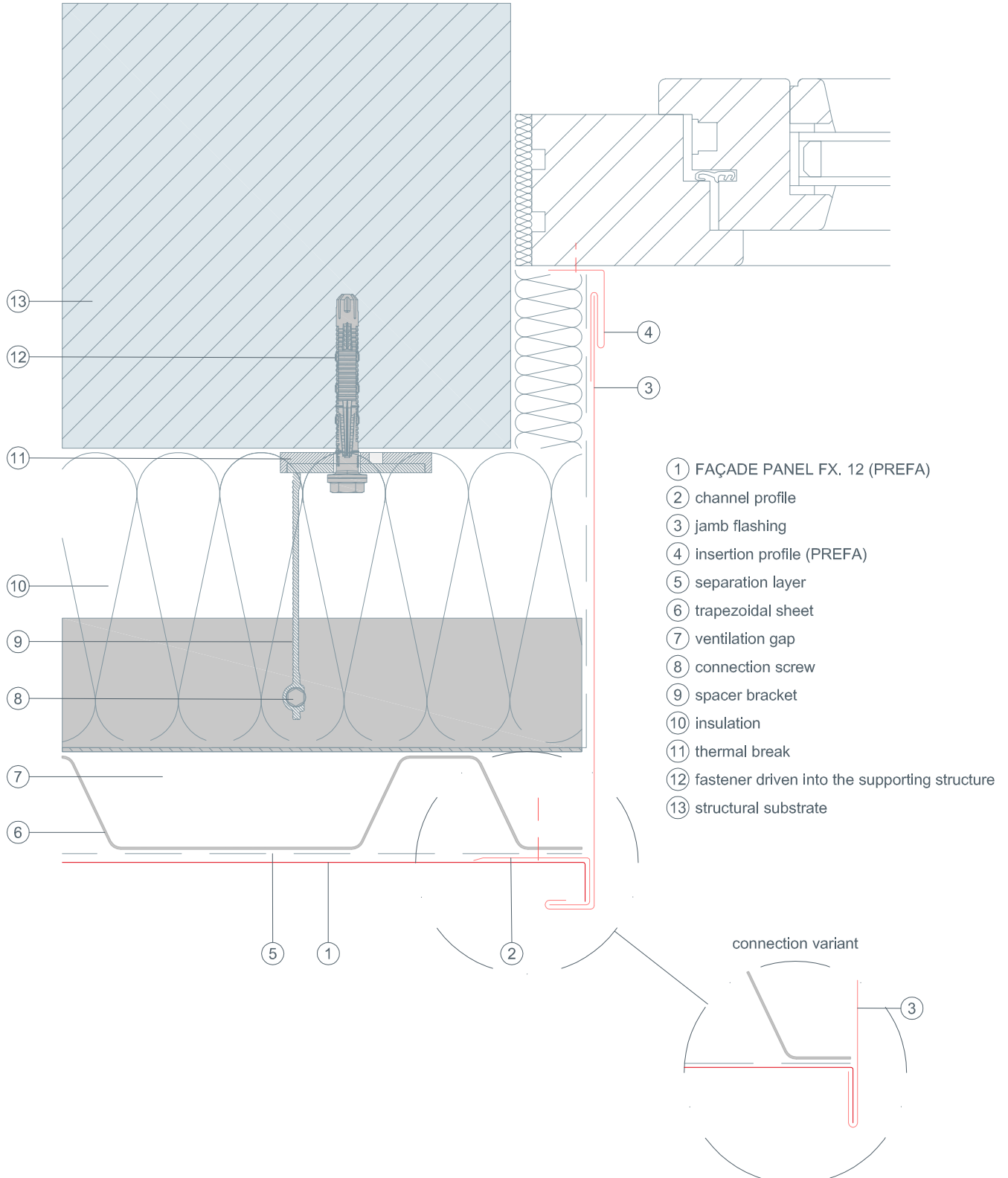




STARK WIE EIN STIER

window reveals horizontal cross-section FAÇADE PANEL FX. 12 (PREFA)

CAD DETAILS

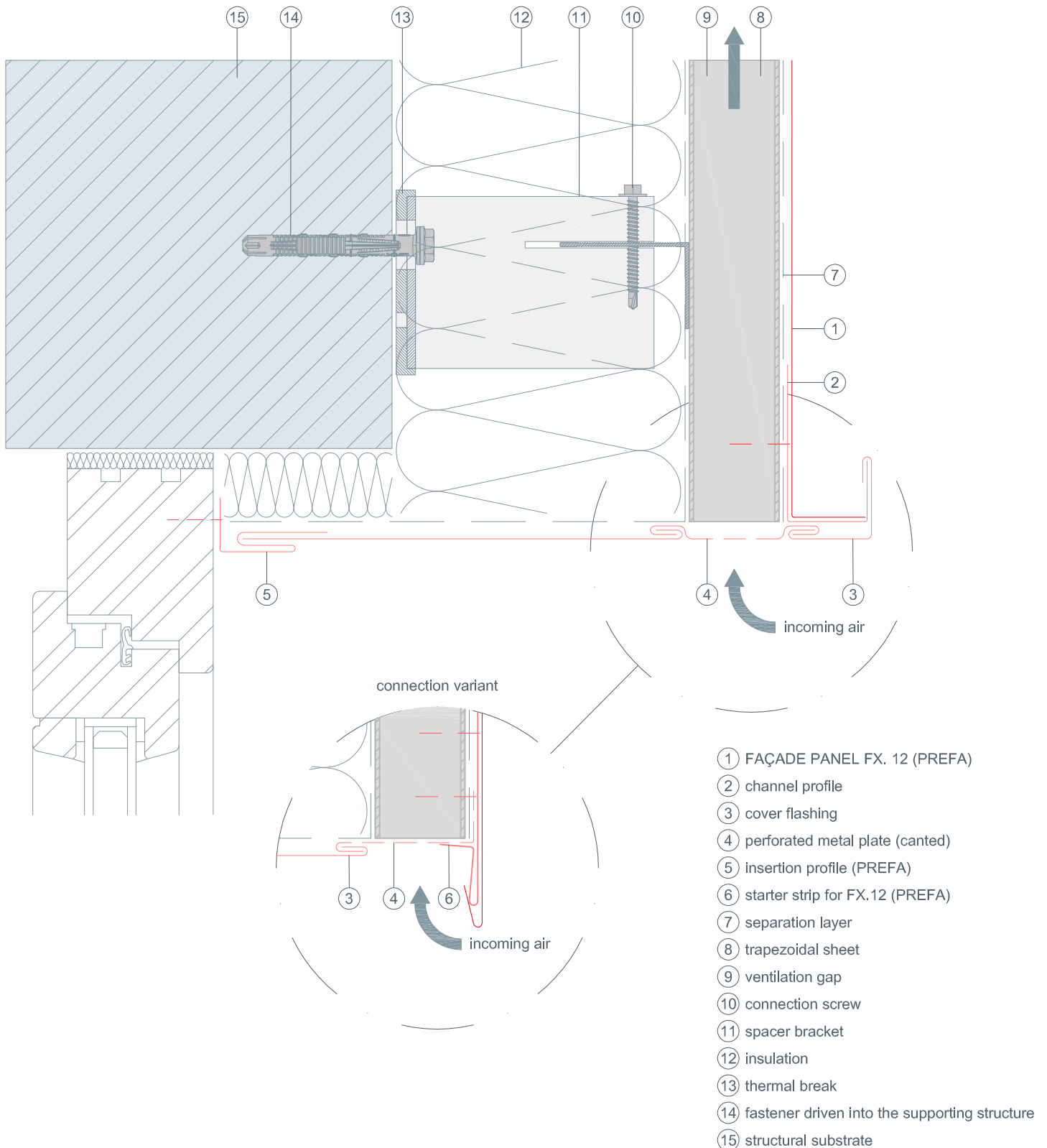




STARK WIE EIN STIER

window lintel vertical cross-section FAÇADE PANEL FX. 12 (PREFA)

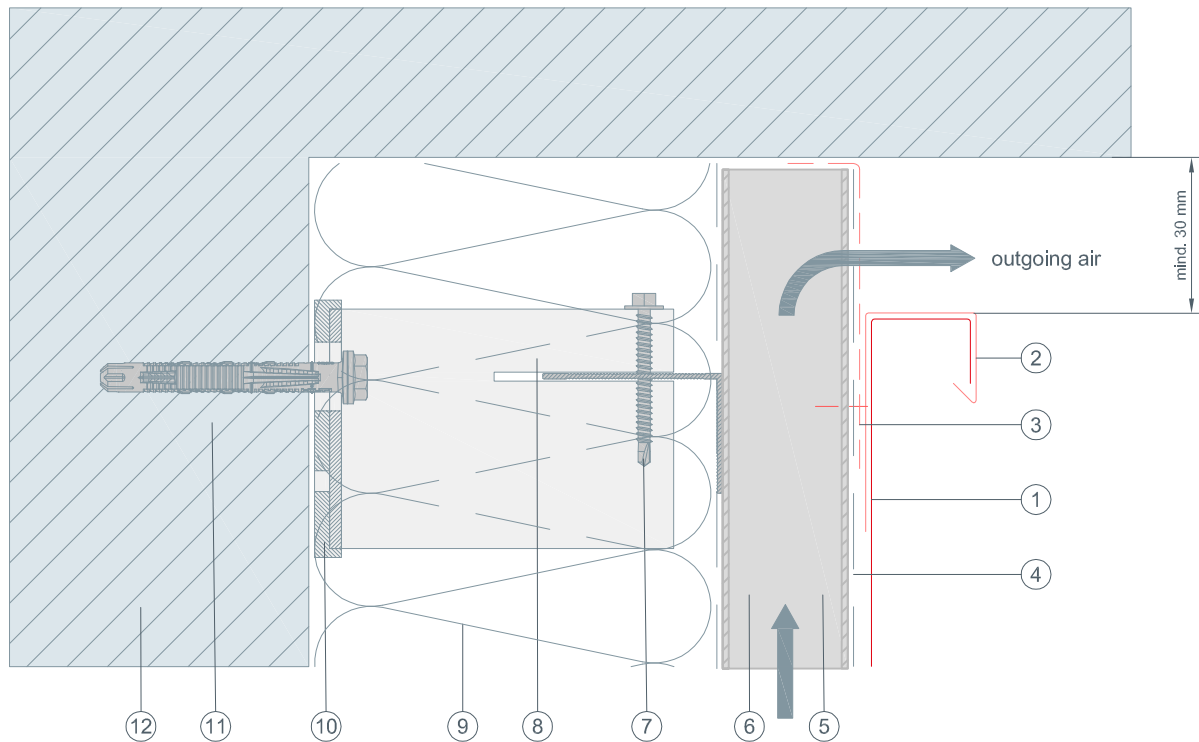
CAD DETAILS





STARK WIE EIN STIER

top connection vertical cross-section FAÇADE PANEL FX. 12 (PREFA) CAD DETAILS

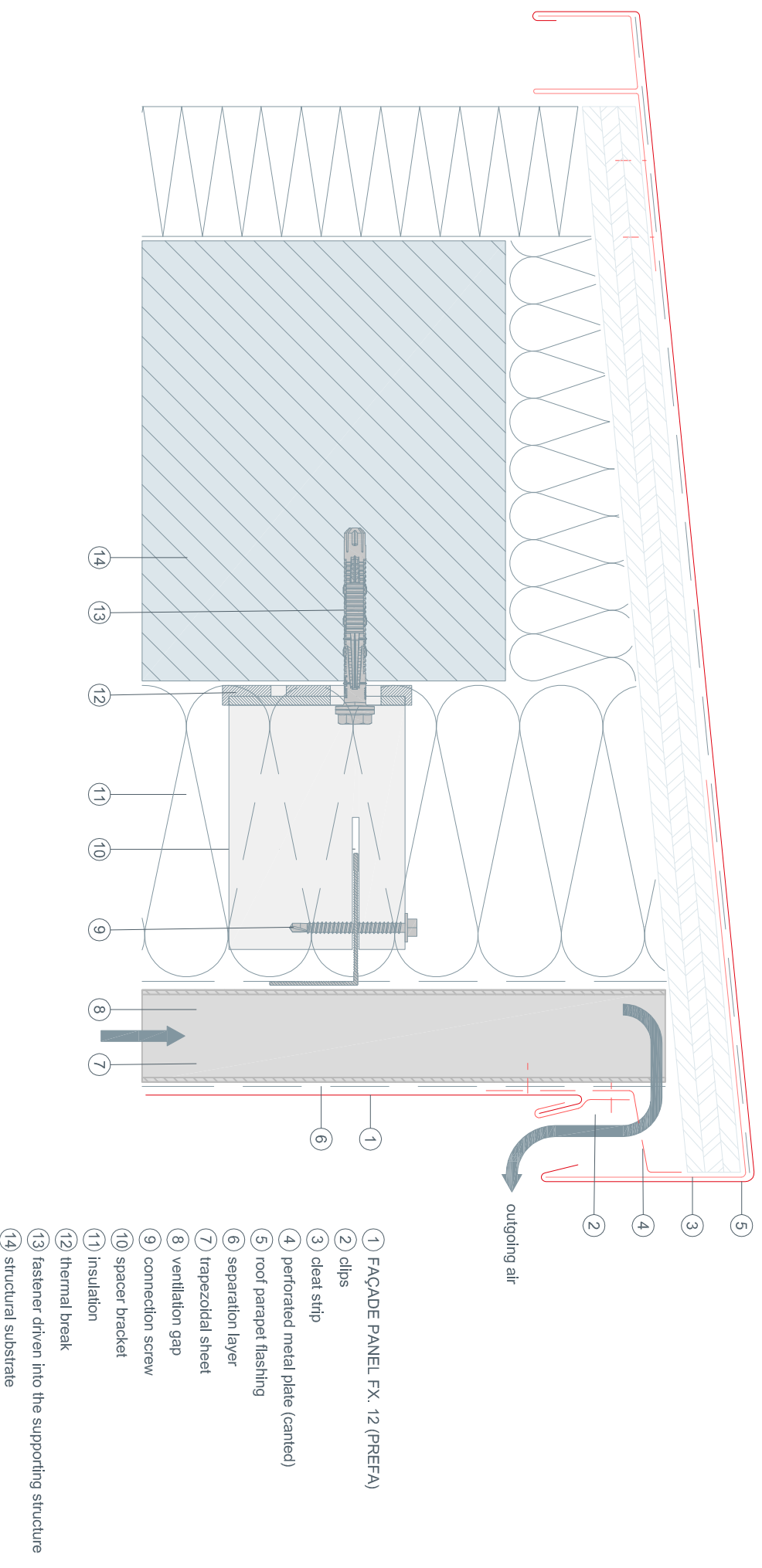


- ① FAÇADE PANEL FX. 12 (PREFA)
- ② channel profile
- ③ perforated metal plate (canted)
- ④ separation layer
- ⑤ trapezoidal sheet
- ⑥ ventilation gap
- ⑦ connection screw
- ⑧ spacer bracket
- ⑨ insulation
- ⑩ thermal break
- ⑪ fastener driven into the supporting structure
- ⑫ structural substrate



STARK WIE EIN STIER

roof parapet vertical cross-section FAÇADE PANEL FX. 12 (PREFA) CAD DETAILS

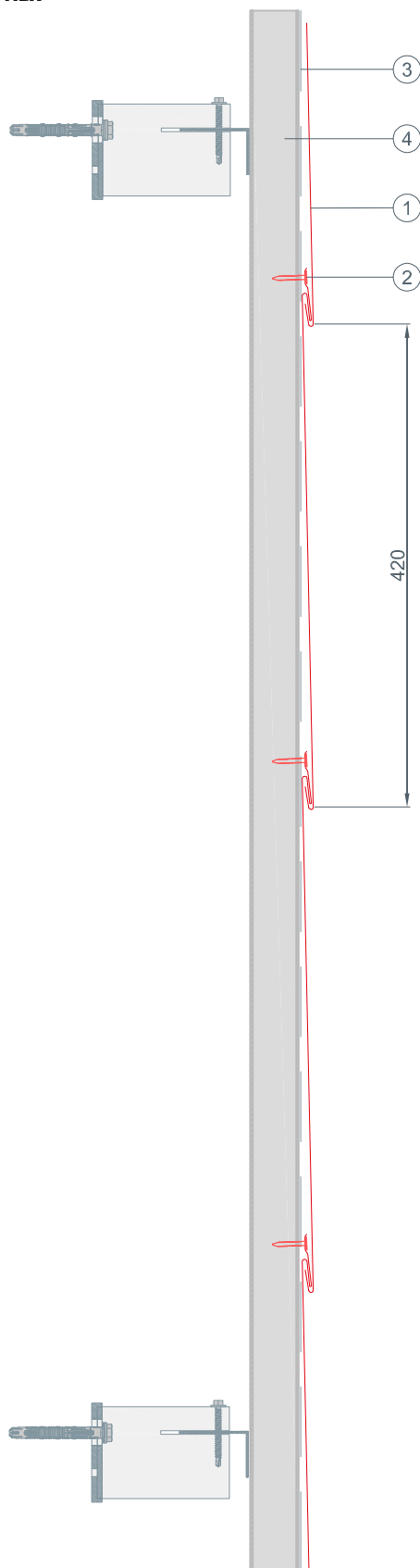




STARK WIE EIN STIER

installation dimension vertical cross-section FAÇADE PANEL FX. 12 (PREFA)

CAD DETAILS



- ① FAÇADE PANEL FX. 12 (PREFA)
- ② ring nails, galvanised
- ③ separation layer
- ④ trapezoidal sheet